

Sherwood - Indooroopilly

SA3 Population Health
Snapshot 2023

54,295



Demographics₁

people living in this region in 2021

21 km²

Age	First Nations		Non Indigenous		Not Stated		Total
	Count	% of Age group	Count	% of Age group	Count	% of Age group	
0-4	30	1.3%	2,219	95.8%	68	2.9%	2,317
5-14	45	0.7%	6,333	97.3%	130	2.0%	6,508
15-24	171	1.5%	10,981	95.8%	307	2.7%	11,459
25-44	124	0.8%	14,854	96.0%	501	3.2%	15,479
45-64	61	0.5%	10,904	97.1%	270	2.4%	11,235
65+	16	0.2%	7,035	96.4%	246	3.4%	7,297
Total pop	447	0.8%	52,326	96.4%	1,522	2.8%	

Male
26,393 48.6%

Female
27,889 51.4%

(Approximates)

Priority Populations₁

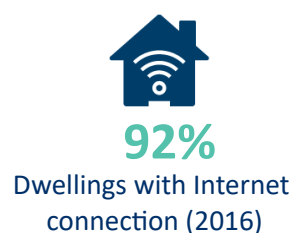
Top 5 Ancestries



Ancestry	Count
English	18,586
Australian	15,055
Irish	7,252
Scottish	6,602
Chinese	5,485



Social determinants_{2,1}



Education	Eligible respondents	% respondents
Didn't go to school	150	0%
Yr10 or below	4,715	11%
Yr11/equiv	1,726	4%
Yr12/equiv	37,117	85%

Higher education	Eligible respondents	% respondents
Cert I/II/nfd	930	3%
Cert III/IV	3,209	11%
Advanced Diploma/Diploma	3,439	11%
Grad Diploma/Certificate	1,812	6%
Bachelor Degree	13,546	44%
Post Grad Degree	7,592	25%

Medians (middle of the group)₁

33yrs
Age

\$881
Weekly personal
income

\$2,732
Weekly family
income

\$2,078
Weekly household
income

\$2,167
Monthly
mortgage
repayments

\$410
Weekly rent

Sherwood - Indooroopilly

SA3 Population Health
Snapshot 2023

54,295
people living in this region in 2021



Vulnerable children₃

Australian Early Developmental Census

69%

children developmentally on track

4%

children vulnerable in 2 or more domains

5%

children vulnerable: physical health & wellbeing domain

2%

children vulnerable: language & cognitive skills domain

4%

children vulnerable: social competence domain

Self-reported long term health conditions₁

Health Condition	First Nations		Non Indigenous		Not Stated		Total	
	Count	%	Count	%	Count	%	Count	%
Arthritis	21	4.7%	2,684	5.1%	15	1.0%	2,720	5.0%
Asthma	62	13.9%	4,094	7.8%	14	0.9%	4,170	7.7%
Cancer	3	0.7%	1,458	2.8%	4	0.3%	1,465	2.7%
Dementia	0	0.0%	268	0.5%	0	0.0%	268	0.5%
Diabetes	16	3.6%	1,229	2.3%	3	0.2%	1,248	2.3%
Heart Disease	16	3.6%	1,536	2.9%	8	0.5%	1,560	2.9%
Kidney Disease	3	0.7%	260	0.5%	0	0.0%	263	0.5%
Lung Condition	8	1.8%	530	1.0%	5	0.3%	543	1.0%
Mental Health Cond	87	19.5%	4,913	9.4%	14	0.9%	5,014	9.2%
Stroke	4	0.9%	289	0.6%	3	0.2%	296	0.5%
Other	47	10.5%	4,280	8.2%	5	0.3%	4,332	8.0%
None	255	57.0%	35,791	68.4%	43	2.8%	36,089	66.5%
Not Stated	24	5.4%	1,368	2.6%	1,438	94.5%	2,830	5.2%

First Nations
168
38%

Non Indigenous
15,167
29%

Not Stated
41
3%

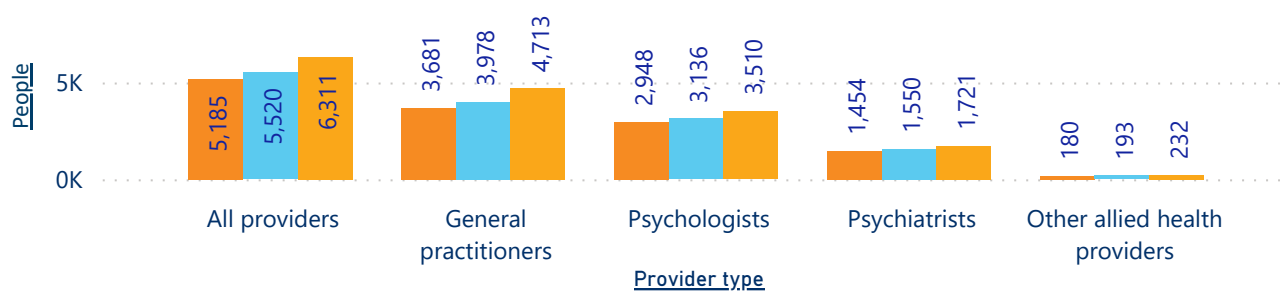
People with 1 or more health conditions

Note not additive across health conditions as people could multi select these in the census

Mental health₄

People receiving Medicare-subsidised mental health-specific services

Fin Yr ● 2018-19 ● 2019-20 ● 2020-21



Total services delivered

Fin Yr	#
2018-19	32,095
2019-20	33,652
2020-21	39,816

Death - Top 3 causes of death₅

Crude rate per 100,000

1. Coronary heart disease(46.3)
2. Dementia(38)
3. Cerebrovascular disease(35.1)

SOURCES: 1 ABS 2021 Census, Datapacks, retrieved 01/12/22, <www.abs.gov.au/census/find-census-data/datapacks>, 2 Queensland Government Statistician's Office, Regional Database, retrieved 5/12/22, <www.qgso.qld.au> | 3 Australian Early Development Census, Data, retrieved 5/12/22, <www.aedc.gov.au/early-childhood> | 4 AIHW, Medicare-subsidised mental health specific services, retrieved 5/12/22, <www.aihw.gov.au/mental-health/topic-areas/medicare-subsidised-services> | 5 AIHW, MORT Death data 2016-20, retrieved 10/10/22, <www.aihw.gov.au>

Note -The ABS data captured in this report presents people as Male or Female, despite the census allowing for non-binary responses. Further information in how this was collected in the census and consequently provided can be found at www.abs.gov.au/articles/non-binary-sex-2021-census