

Holland Park - Yeronga

SA3 Population Health
Snapshot 2023

79,384



Demographics₁

people living in this region in 2021

28 km²

Age	First Nations		Non Indigenous		Not Stated		Total
	Count	% of Age group	Count	% of Age group	Count	% of Age group	
0-4	78	2.0%	3,784	95.0%	123	3.1%	3,985
5-14	141	1.9%	7,010	95.3%	204	2.8%	7,355
15-24	314	2.6%	11,582	94.2%	393	3.2%	12,289
25-44	406	1.4%	27,743	95.0%	1,069	3.7%	29,218
45-64	228	1.3%	16,274	94.8%	664	3.9%	17,166
65+	70	0.7%	8,769	93.6%	532	5.7%	9,371
Total pop	1,237	1.6%	75,162	94.7%	2,985	3.8%	

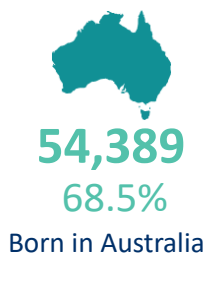
Male
39,023 49.2%

Female
40,360 50.8%

(Approximates)

Priority Populations₁

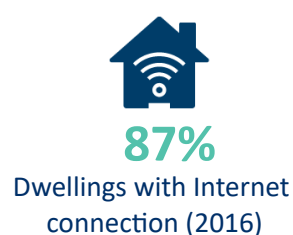
Top 5 Ancestries



Ancestry	Count
English	27,511
Australian	23,176
Irish	11,931
Scottish	9,013
German	4,628



Social determinants_{2,1}



Education	Eligible respondents	% respondents
Didn't go to school	328	1%
Yr10 or below	9,293	14%
Yr11/equiv	2,860	4%
Yr12/equiv	52,322	81%

Higher education	Eligible respondents	% respondents
Cert I/II/nfd	1,512	3%
Cert III/IV	7,276	16%
Advanced Diploma/Diploma	6,188	14%
Grad Diploma/Certificate	2,880	6%
Bachelor Degree	20,176	44%
Post Grad Degree	7,766	17%

Medians (middle of the group)₁

34yrs
Age

\$1,029
Weekly personal
income

\$2,699
Weekly family
income

\$2,032
Weekly household
income

\$2,100
Monthly
mortgage
repayments

\$390
Weekly rent

Holland Park - Yeronga

SA3 Population Health
Snapshot 2023

79,384
people living in this region in 2021



Vulnerable children₃

Australian Early Developmental Census

58%

children developmentally on track

7%

children vulnerable in 2 or more domains

7%

children vulnerable: physical health & wellbeing domain

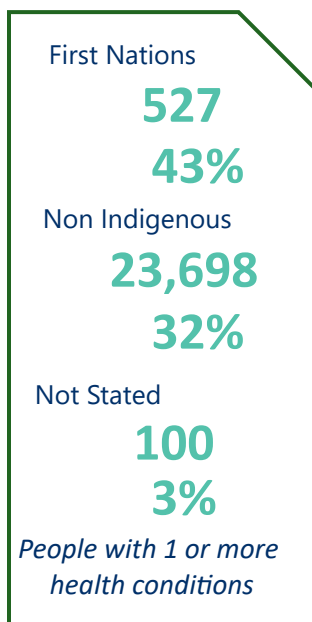
4%

children vulnerable: language & cognitive skills domain

8%

children vulnerable: social competence domain

Self-reported long term health conditions₁



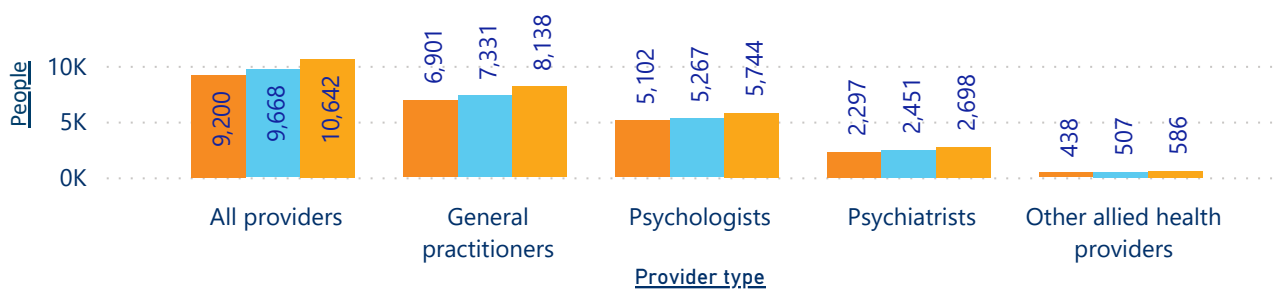
Health Condition	First Nations		Non Indigenous		Not Stated		Total	
	Count	%	Count	%	Count	%	Count	%
Arthritis	59	4.8%	4,431	5.9%	19	0.6%	4,509	5.7%
Asthma	210	17.0%	6,432	8.6%	16	0.5%	6,658	8.4%
Cancer	31	2.5%	1,983	2.6%	8	0.3%	2,022	2.5%
Dementia	3	0.2%	450	0.6%	11	0.4%	464	0.6%
Diabetes	68	5.5%	2,201	2.9%	21	0.7%	2,290	2.9%
Heart Disease	38	3.1%	2,287	3.0%	17	0.6%	2,342	3.0%
Kidney Disease	14	1.1%	494	0.7%	0	0.0%	508	0.6%
Lung Condition	30	2.4%	960	1.3%	14	0.5%	1,004	1.3%
Mental Health Cond	251	20.3%	8,573	11.4%	27	0.9%	8,851	11.1%
Stroke	12	1.0%	571	0.8%	10	0.3%	593	0.7%
Other	132	10.7%	6,619	8.8%	23	0.8%	6,774	8.5%
None	641	51.8%	49,058	65.3%	124	4.2%	49,823	62.8%
Not Stated	69	5.6%	2,406	3.2%	2,761	92.5%	5,236	6.6%

Note not additive across health conditions as people could multi select these in the census

Mental health₄

People receiving Medicare-subsidised mental health-specific services

Fin Yr ● 2018-19 ● 2019-20 ● 2020-21



Total services delivered

Fin Yr	#
2018-19	55,348
2019-20	58,006
2020-21	65,750

Death - Top 3 causes of death₅

Crude rate per 100,000

1. Coronary heart disease(85.3) 2. Dementia(52.7) 3. Cerebrovascular disease(29.8)

SOURCES: 1 ABS 2021 Census, Datapacks, retrieved 01/12/22, <www.abs.gov.au/census/find-census-data/datapacks>, 2 Queensland Government Statistician's Office, Regional Database, retrieved 5/12/22, <www.qgso.qld.au> | 3 Australian Early Developmental Census, Data, retrieved 5/12/22, <www.aedc.gov.au/early-childhood> | 4 AIHW, Medicare-subsidised mental health specific services, retrieved 5/12/22, <www.aihw.gov.au/mental-health/topic-areas/medicare-subsidised-services> | 5 AIHW, MORT Death data 2016-20, retrieved 10/10/22, <www.aihw.gov.au>

Note -The ABS data captured in this report presents people as Male or Female, despite the census allowing for non-binary responses. Further information in how this was collected in the census and consequently provided can be found at www.abs.gov.au/articles/non-binary-sex-2021-census

Clea Myers - Refreshed 10-May-23