

Brisbane Inner - East

SA3 Population Health
Snapshot 2023

44,375



people living in this region in 2021

Demographics₁

16 km²

Age	First Nations		Non Indigenous		Not Stated		Total
	Count	% of Age group	Count	% of Age group	Count	% of Age group	
0-4	59	2.4%	2,372	95.0%	67	2.7%	2,498
5-14	114	2.2%	5,010	95.0%	151	2.9%	5,275
15-24	156	2.7%	5,438	93.6%	215	3.7%	5,809
25-44	226	1.5%	14,473	94.3%	656	4.3%	15,355
45-64	128	1.2%	10,495	95.0%	421	3.8%	11,044
65+	47	1.1%	4,153	94.5%	194	4.4%	4,394
Total pop	730	1.6%	41,941	94.5%	1,704	3.8%	

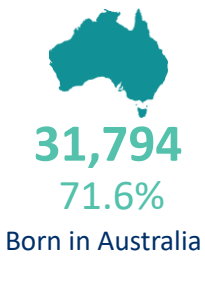
Male
21,718 48.9%

Female
22,668 51.1%

(Approximates)

Priority Populations₁

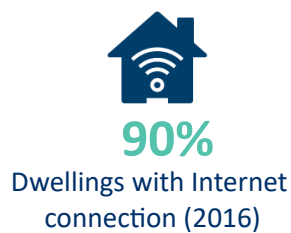
Top 5 Ancestries



Ancestry	Count
English	17,977
Australian	14,057
Irish	7,094
Scottish	5,540
German	2,631



Social determinants_{2,1}



Education	Eligible respondents	% respondents
Didn't go to school	106	0%
Yr10 or below	5,152	15%
Yr11/equiv	1,777	5%
Yr12/equiv	27,873	80%

Higher education	Eligible respondents	% respondents
Cert I/II/nfd	801	3%
Cert III/IV	4,170	17%
Advanced Diploma/Diploma	3,605	15%
Grad Diploma/Certificate	1,548	6%
Bachelor Degree	10,811	44%
Post Grad Degree	3,772	15%

Medians (middle of the group)₁

35yrs
Age

\$1,235
Weekly personal
income

\$3,243
Weekly family
income

\$2,469
Weekly household
income

\$2,500
Monthly
mortgage
repayments

\$440
Weekly rent

Brisbane Inner - East

SA3 Population Health
Snapshot 2023

44,375
people living in this region in 2021



Vulnerable children₃

Australian Early Developmental Census

62%

children developmentally on track

8%

children vulnerable in 2 or more domains

6%

children vulnerable: physical health & wellbeing domain

3%

children vulnerable: language & cognitive skills domain

8%

children vulnerable: social competence domain

Self-reported long term health conditions₁

Health Condition	First Nations		Non Indigenous		Not Stated		Total	
	Count	%	Count	%	Count	%	Count	%
Arthritis	33	4.5%	2,057	4.9%	18	1.1%	2,108	4.8%
Asthma	90	12.3%	3,208	7.6%	10	0.6%	3,308	7.5%
Cancer	17	2.3%	1,035	2.5%	0	0.0%	1,052	2.4%
Dementia	7	1.0%	218	0.5%	0	0.0%	225	0.5%
Diabetes	36	4.9%	937	2.2%	0	0.0%	973	2.2%
Heart Disease	30	4.1%	1,078	2.6%	5	0.3%	1,113	2.5%
Kidney Disease	4	0.5%	247	0.6%	0	0.0%	251	0.6%
Lung Condition	13	1.8%	404	1.0%	0	0.0%	417	0.9%
Mental Health Cond	137	18.8%	3,958	9.4%	8	0.5%	4,103	9.2%
Stroke	7	1.0%	227	0.5%	0	0.0%	234	0.5%
Other	62	8.5%	3,092	7.4%	9	0.5%	3,163	7.1%
None	422	57.8%	28,808	68.7%	57	3.3%	29,287	66.0%
Not Stated	26	3.6%	1,265	3.0%	1,612	94.6%	2,903	6.5%

First Nations
282
39%

Non Indigenous
11,868
28%

Not Stated
35
2%

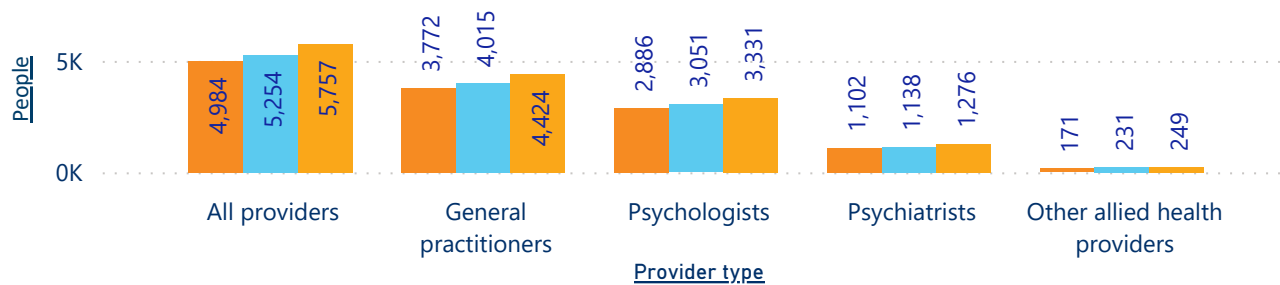
People with 1 or more health conditions

Note not additive across health conditions as people could multi select these in the census

Mental health₄

People receiving Medicare-subsidised mental health-specific services

Fin Yr ● 2018-19 ● 2019-20 ● 2020-21



Total services delivered

Fin Yr	#
2018-19	28,766
2019-20	30,125
2020-21	34,114

Death - Top 3 causes of death₅

Crude rate per 100,000

1. Coronary heart disease(32.2) 2. Dementia(30.4) 3. Cerebrovascular disease(17.9)

SOURCES: 1 ABS 2021 Census, Datapacks, retrieved 01/12/22, <www.abs.gov.au/census/find-census-data/datapacks>, 2 Queensland Government Statistician's Office, Regional Database, retrieved 5/12/22, <www.qgso.qld.au> | 3 Australian Early Developmental Census, Data, retrieved 5/12/22, <www.aedc.gov.au/early-childhood> | 4 AIHW, Medicare-subsidised mental health specific services, retrieved 5/12/22, <www.aihw.gov.au/mental-health/topic-areas/medicare-subsidised-services> | 5 AIHW, MORT Death data 2016-20, retrieved 10/10/22, <www.aihw.gov.au>

Note -The ABS data captured in this report presents people as Male or Female, despite the census allowing for non-binary responses. Further information in how this was collected in the census and consequently provided can be found at www.abs.gov.au/articles/non-binary-sex-2021-census